



NEWSLETTER



Central Tilba Public School

Term 3, Week 1
WEDNESDAY
July 15th, 2015

Dear Parents and Students,

It's nice to be back after an extended holiday. My family and I were finally able to get a return flight to Sydney from Bali on the weekend. Thank you to all the staff who looked after everything so well in my absence. I would particularly like to welcome back and thank Peter Markham for his work with the Primary Class.

Unfortunately, the Quaama Sports Day has been postponed again due to the wet condition of the ground and the possibility of more rain. We will advise you of a new date as soon as we know.

On Friday, despite the postponement of our Athletics Carnival with Quaama again, five of our students will compete at the District Athletics Carnival in Batemans Bay. I have selected Billy, Zayd, Chase, Jack and Layla on the basis of trials conducted recently. I am sure they will do our school proud.

A calendar of known events is published in this Newsletter and will be updated as the term progresses. I have also included an outline of the activities the Primary Class will be involved in.

Yesterday a meeting was to have taken place regarding parental interest in the Kids Matter program and the formation of an Action Team to move forward. Unfortunately, no one was able to attend. I will seek your support at our next P&C Meeting.

Last term I put an article in the Newsletter each week about Writing expectations for each grade using the Literacy Continuum. This term I will focus on Number, Addition, Subtraction, Multiplication and Division from the Numeracy Continuum. This week will centre on Kindergarten.

Regards,

John Carter, Principal

REMINDERS

⇒ QUAAMA
CARNIVAL
POSTPONED
AGAIN

⇒ ***NEW* EVERY**
FRIDAY LUNCH
ORDERS - ORDER
MUST BE IN
TOMORROW

⇒ P&C SPECIAL
LUNCH DAY NEXT
TUESDAY -
ORDERS IN BY
THIS FRIDAY

⇒ **PRIMARY CLASS -**
START PAYING
FOR THE END OF
YEAR EXCURSION
NOW.

VOLUNTEER AS
FEMALE PARENT
FOR EXCURSION

⇒ PAY VOLUNTARY
SCHOOL
CONTRIBUTIONS
STUDENT
INSURANCE &
P&C M/SHIP

Central Tilba Public School
89 Corkhill Drive
Central Tilba NSW 2546

Phone: 02 4473 7210

Fax: 02 4473 7469

E-mail:

centrtilba-p.admin@det.nsw.edu.au

We're on the web!!

www.centrtilba-p.schools.nsw.edu.au

**Find our full colour
newsletter here!**

SICK CHILDREN

There are many children at our school (and other schools) who have come down with cold/flu/tummy bug types of viruses.

If your child is sick, HOME is the best place for them, not school. This will help them recover and also not infect other students or staff.

THANK YOU.

Why your child should go to school.

The Education Act (1990) states that children must attend school unless there are justified reasons for an absence.

All absences must be explained to the school within seven days of their occurrence.

Why must I send my child to school?

- * The law in NSW states that all children between the ages of 6 and 17 years of age are required to attend school regularly.
- * It is the responsibility of parents or caregivers to make sure that their children attend school every day.

Must I send my child to school everyday?

YES unless.....

- * Your child is too sick to go to school
- * Your child has been injured
- * Your child has to go to a special religious ceremony
- * Your child has an infectious illness, (eg. chicken pox, mumps or measles)
- * There is a serious family situation which requires their involvement.

Must my child attend school sport?

YES

- * Sport and other exercise help the healthy physical development of children. Sport is part of normal school activity which students must attend.

Why is regular attendance at school important?

- * Attending school everyday makes learning easier for your child and helps build and maintain friendships with other children.
- * If students miss the basic skills in the early years of school, they may have problems later on.
- * Regular attendance at school will help your child succeed in later life.
- * Unsatisfactory school attendance may affect the awarding of the Higher School Certificate (HSC).

Please do not keep your child away from school for:

- * Birthdays
- * Pension day
- * Minding other children
- * Hair cuts
- * Interpreting for other family members
- * Always try to make appointments with people like dentists or doctors *before or after school*.

What should I do if my child has to stay away from school?

- * It is important to let the school know when your child will be away and why your child was absent.
- * The parent or caregiver should provide a written note addressed to the school explaining the child's absence within 7 days of the absence occurring.

Planning on going on holiday in school time?

Please complete an "Application for Extended Leave", available on the school website OR at the front office and submit to school for Principal's approval prior to travelling

My child won't go to school. What should I do?

You should contact the Principal as soon as possible to discuss the problem and ask for help. The Principal may ask a Home School Liaison Officer to contact you to discuss the issue.

School is a place, where parents and caregivers, staff and children learn and grow together.

Children need an education to reach their potential.

Attendance every day is important for children's progress at school.

Children who attend school regularly are usually more successful than those who are absent frequently.

Please let the school know when your child cannot be there because of illness or family matters.



DATES FOR YOUR DIARY OR THE FRIDGE DOOR MAGNET

PLEASE NOTE: Dates are subject to change or cancellation if unforeseen circumstances arise.

Thursday, July 23rd	Quaama Athletics Carnival (whole school event)
Friday, July 24th	District Athletics Carnival (selected students)
Monday - Friday July 27th-31st	Education Week - NSW Public Schools Theme 'Creating The Future'
Tuesday, July 28th	P&C Special Lunch Day
Friday, August 7th	Whole School Assembly - Yrs 3/4/5/6 presenting items including performances by the school bands. P&C Meeting date/time to be advised.
Monday, August 10th	Responsible Pet Program (Infants Class only)
Monday, August 31st	Life Education Van Visit (whole school event)
Friday, September 9th	Whole School Assembly - Yrs K/1/2 presenting items. P&C Meeting date/time to be advised.
Friday, September 18th	Last day of Term Three.
Monday, October 5th	Labour Day Public Holiday
Tuesday, October 6th	First day of Term Four for teachers and students.

Numeracy Continuum

NUMBER - KINDERGARTEN

Please note that the information presented in this Newsletter is of a general nature. For specific information related to your child, it is recommended that you speak with your child's teacher. By the end of Kindergarten, a child should be able to:

WHOLE NUMBERS

- ☺ Count forwards to 30 from a given number.
- ☺ Count backwards from a given number in the range 0 to 20.
- ☺ Compare, order, read and represent numbers to at least 20.
- ☺ Read and use the ordinal names to at least 'tenth'.
- ☺ Count small collections of objects.
- ☺ Use the term 'is the same as' to express equality of groups.
- ☺ Use the language of money.

ADDITION AND SUBTRACTION

- ☺ Combine 2 or more groups of objects to model addition.
- ☺ Take part of a group away to model subtraction.
- ☺ Compare 2 groups to determine 'how many more'.
- ☺ Record addition and subtraction informally.

MULTIPLICATION AND DIVISION

- ☺ Investigate and model equal groups.
- ☺ Record grouping and sharing using informal methods.



THE PRIMARY CLASS IN TERM THREE

John Carter, Class Teacher & Principal

- * This term the Primary Class will complete the last five weeks of the Premier's Sporting Challenge. They will focus on regular physical activity to promote a fit and healthy lifestyle.
- * Following the Quaama Sports Day, the children will work at developing their relay skills as our small schools relay team progresses through to the Regional Carnival. Focus skills will centre on soccer, AFL, Austag and Dodgeball skills.
- * In Numeracy, children will continue to develop their times tables recall, as well as focusing on multiplication and division, recording data, rounding numbers, developing more complex addition skills, measuring perimeter and area, writing fractions as decimals and time calculations.
- * In Literacy the children will be developing their skimming and scanning skills in reading, retelling stories through summaries, looking at homonyms and synonyms, prefixes and suffixes and a range of grammatical devices designed to improve their writing. They will be working to increase their typing and handwriting skills and use grammar and spell check strategies on the computer.
- * In Music, the children will continue their band work and will perform at the first Whole School Assembly of the term in Week Four.
- * Mr Markham's creative skills will see some innovative sculptures produced with Bermagui's 'Sculpture On The Edge' exhibition in mind for next year.
- * In HSIE, the children will complete a study of another culture. They will study about Bali as an example of one of our Asian neighbours. Mr Markham and I have both been to Bali so hopefully we can offer some insights into the country.
- * In Science the children will study desert environments and how animals and plants adapt to different climatic conditions.
- * We will be visited by the Life Education Van during Term Three.
- * Please contact me at any time if you would like to discuss your child's progress.

PRIMARY CLASS END OF YEAR EXCURSION - ADVANCE NOTICE

This year the Primary Class will be going to Canberra for their End of Year Excursion. We will leave on Wednesday, November 25th, and return on Friday, November 27th, a 3 day, 2 night excursion. Transport is by bus.

The itinerary consists of Cockington Green, Australian Institute of Sport, National Dinosaur Museum, Australian War Memorial, Parliament House, Old Parliament House (Museum of Australian Democracy), Telstra Tower, Ice Skating and Questacon. Accommodation will be at the Bush Capital Lodge in Canberra.

This has been costed at over \$375 per student, but the P&C have very generously agreed to subsidise this by \$175 per student, so the cost per student to parents will be \$200. Parents can (and are encouraged to) start paying a regular sum weekly now, so that it will not be a huge amount to pay just prior to Christmas.

We will also need a female parent to volunteer to come along as support for the girls. There is no cost involved for this parent and you do not have to be the parent of a girl. If you would be interested in joining us and are available on these dates, please let Linda know ASAP. As usual, a name will be 'drawn from the hat' in early Term 4. More information will be sent out closer to the date.

Central Tilba School has a policy that no child should be excluded from an excursion for financial reasons. If payment is a problem, please contact the school ASAP. All discussions of this nature are completely confidential.

CANTEEN MENU

BY MY HEAVEN ON EARTH CAFÉ

Complete order form and return to school
tomorrow (THURSDAY) morning with
correct payment (cash only).

Absolutely **NO** late orders will be accepted !

Lunch orders will be delivered for lunch on Friday

(Note: pricing is for school canteen only)

STUDENT NAME(S):

ITEM	CHILD'S NAME IF MORE THAN ONE CHILD	ITEM COST	QTY	TOTAL
Jam Sandwich		\$2.00		
Vegemite Sandwich		\$2.00		
Honey Sandwich		\$2.00		
Ham & Cheese Sandwich		\$3.50		
Veg Wrap		\$3.50		
Plain Beef Pie		\$3.50		
Veg Pastie		\$3.50		
Pizza Pastie		\$3.00		
Chicken Pie		\$4.00		
Garlic Bread		\$2.00		
Cut Veg Box		\$3.00		
Cut Fruit Box		\$3.00		
Frozen Yoghurt		\$2.00		
Jelly Cup		\$2.00		
Sultanas		\$1.50		
Today's Slice		\$3.00		
TOTAL AMOUNT ENCLOSED				\$



SPECIAL LUNCH DAY - TUESDAY, July 28th

Orders **MUST** be in by **THIS FRIDAY MORNING**,
9.30am, July 24th

Absolutely **NO** late orders will be accepted !

NEXT MONDAY IS TOO LATE !!

Note : EFT payments to P&C - NOT School

Please make sure you **INCLUDE STUDENT NAME(S)**

Huge thanks to Clover and Kathy for preparing these lunches.

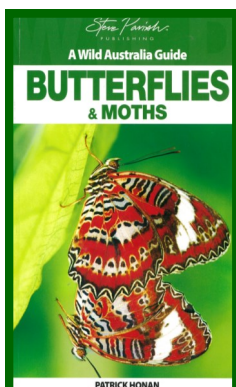
STUDENT NAME(S):

ITEM	CHILD'S NAME IF MORE THAN ONE CHILD	ITEM COST	QTY	TOTAL
<u>Home Made Chicken & Corn Pie</u> <i>Served with small salad (lettuce, cucumber, tomato and feta)</i>		\$3.00		
<u>Home Made Cheese & Spinach Pie</u> <i>Served with small salad (lettuce, cucumber, tomato and feta)</i>		\$3.00		
<u>Choc Wedge</u> <i>Chocolate coated vanilla ice cream on a stick</i>		\$1.00		

Note: EFT payment to P&C

TOTAL AMOUNT ENCLOSED

\$



**Thank you to the Tilba CWA
for their very kind donation
of this book for our library.**



Community Notice Board

Please note: the NSW Department of Education and Training does not endorse any product or service advertised in this newsletter.



MESSAGES TO STUDENTS - If you need to get a message to your child regarding afternoon travel arrangements, please try and ring the school as early as possible in the day. Thank you.

UNIFORM - If you need any school uniform, please contact Linda by note, phone or email (centrtilba-p.admin@det.nsw.edu.au).

BOOKCLUB - Brochures are attached to this newsletter. If you would like to place an order, please return order form and payment by **Thursday week, July 30th.**

WOOLWORTHS EARN & LEARN IS BACK!!!

Please remember to ask for your stickers every time you spend \$10 or more. Completed sheets and stickers can be placed in the school collection bin at Woolworths in Narooma or in the foyer at school. One sticker sheet is attached for each family and extras can be obtained from Woolworths. Get all your family, friends and neighbours to collect these stickers for our school and our kids.

MORUYA SLSC TOWN TO SURF FUN RUN -

Sunday, September 13th. For more info and to register visit moruyasurf.org.au or contact Mike on 4474 4046.

NAROOMA PRESCHOOL FUNDRAISER

LADIES' NIGHT OUT

- Narooma Preschool is hosting an exclusive gold class movie night, featuring Magic Mike XXL!
- Friday, July 31st, 7pm for a 7.30pm start.
- Nibbles and refreshments will be served to you all night in the comfort of your seat!
- Bid on fantastic items in a silent auction! Come along with your friends and enjoy a great night out.
- Gold Class Ticket \$25
- Premium Gold Class Ticket \$40
- Contact Narooma Preschool on 4476 2494 or Narooma Kinema on 4476 2352 for tickets and more details.

Run for Teal

Batemans Bay



25 October 2015

6km / 14km / Half Marathon / Full Marathon

Come and support 'Ovarian Cancer Australia' by running, walking or crawling your way around the stunning coastal town of Batemans Bay. It's a Fun Run for all ages and levels and a great active family day out. Get creative and run in fancy dress, you might even win a prize!

After the run/walk, enjoy the amazing atmosphere with loads to do, bands to watch and local stalls to wander around.

Race starts: 9:15am @ Corrigan's Beach


Register online today!

#OvarianCancer **www.runforteal.com** #OVAwareness

<https://www.facebook.com/inchbyinchlifestyle>

Join our FB page for all the fun, training tips, recipes, ovarian cancer awareness and much much more!





2015 MAYOR'S WRITING COMPETITION

Are you a young writer between the ages of 5 – 18years? Do you have a great story to tell? Would you love to see your story published? Here is your chance to make it happen! So, what are you waiting for?

Pick up an entry form at your local library or download one by clicking on News and Events on the Council homepage www.esc.nsw.gov.au and Mayor's Writing Competition.

ENTRIES CLOSE: 5pm FRIDAY 28 AUGUST 2015

It's back!









VOLUNTARY SCHOOL CONTRIBUTIONS, STUDENT ACCIDENT INSURANCE & P&C MEMBERSHIP

***PLEASE RETURN AS SOON AS POSSIBLE AND
CIRCLE 'EFT' IF THAT IS YOUR PAYMENT METHOD***

VOLUNTARY SCHOOL CONTRIBUTIONS (SCHOOL FEES) – *This has been set by the P&C at \$40/student or \$70/family for the year.* This is extremely low compared to other local primary schools. We ask that all parents consider paying this small cost towards their child's education if they can. Please send in your contribution with the form below.

**CHEQUES PAYABLE TO CENTRAL TILBA PUBLIC SCHOOL
EFT - BSB 032-001 A/C NO. 153128**

Family Name Date

STUDENT ACCIDENT INSURANCE – *The cost is \$10 per student.* The P&C has already paid for **ALL** students in the school to be covered and ask that parents consider reimbursing the P&C this small cost for having their primary student children covered for accidents. ***We ask that you send in the \$10 per student as soon as possible.*** If you can't afford the whole \$10 per student, any contribution you can afford would be great. Please send in with the form below. Please don't forget to let the school know if your child has any kind of injury covered by the benefits payable so that we can send a claim home for you to complete (even if you haven't paid the insurance). ***Please note this is a '24/7' cover, NOT just school hours or events.***

Enclosed is \$10.00 per student (or part thereof).

**CHEQUES PAYABLE TO TILBA DISTRICT P&C ASSOCIATION
EFT - BSB 062-652 A/C NO. 00900089**

Student Name(s)..... Date

P&C MEMBERSHIP – The P&C ask all families to become members of our P&C Association. It is not necessary to attend any or all meetings, although we hope that as many parents as possible will try and support the P&C at their meetings, but by paying the small membership subscription of **only \$5.00 per family, per year**, you ARE supporting the P&C. Unless P&C subscriptions have been paid, you are not able to vote on any issues that arise at meetings or at the AGM. ***This donation helps to pay for our affiliation fees with the Federation of P&C's and Public Liability insurances and P&C Workers' insurance; this amounted to over \$400 last year.***

**CHEQUES PAYABLE TO TILBA DISTRICT P&C ASSOCIATION
EFT - BSB 062-652 A/C NO. 00900089**

Family Name Date

